



# **PUTTING THE PIECES OF .NET TOGETHER**

Wade Harvey

8/25/2010



# Welcome

# What are the obstacles?

1. There are a lot of pieces
2. The pieces are scattered out in many different places on the computer
3. Lots of versions
4. Lots of options for each version



# Major Components of .NET

- 1 • Servers
- 2 • .NET Framework
- 3 • Security
- 4 • Monitoring Tools
- 5 • Web Servers
- 6 • SQL Server
- 7 • Software Develop Tools
- 8 • Languages



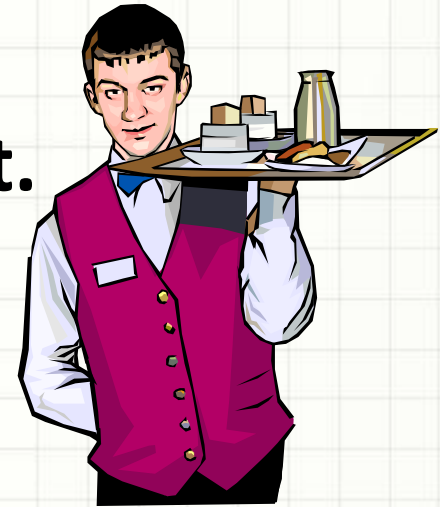
# **1. SERVERS**



# 1. Servers

**What is a server?** It is like a servant.

- A Server is a socket “Listener” that waits for commands and then performs operations to serve up information.
- It is the **foundation**.
- There are many types of servers:
  - Server Operating System
  - Web Servers
  - File Servers
  - FTP Servers
  - Network Server



# Server Operating Systems

A decorative blue wavy line with a gradient, starting from the top right and curving downwards and to the left, ending near the top of the text area.

Server Operating Systems reside in the  
C:\Windows folder

- Windows 2000 & XP – IIS 5.0
- Windows 2003 & Vista – IIS 6.0
- Windows 2008 & Windows 7 – IIS 7.0



## **2. .NET FRAMEWORK**





# .NET Framework

- What is it?
  - It is a virtual machine that includes a large class library.
- Why use it?
  - Reuse code for basic functions
  - Security
  - Memory Management
  - Safe sandboxes for applications.

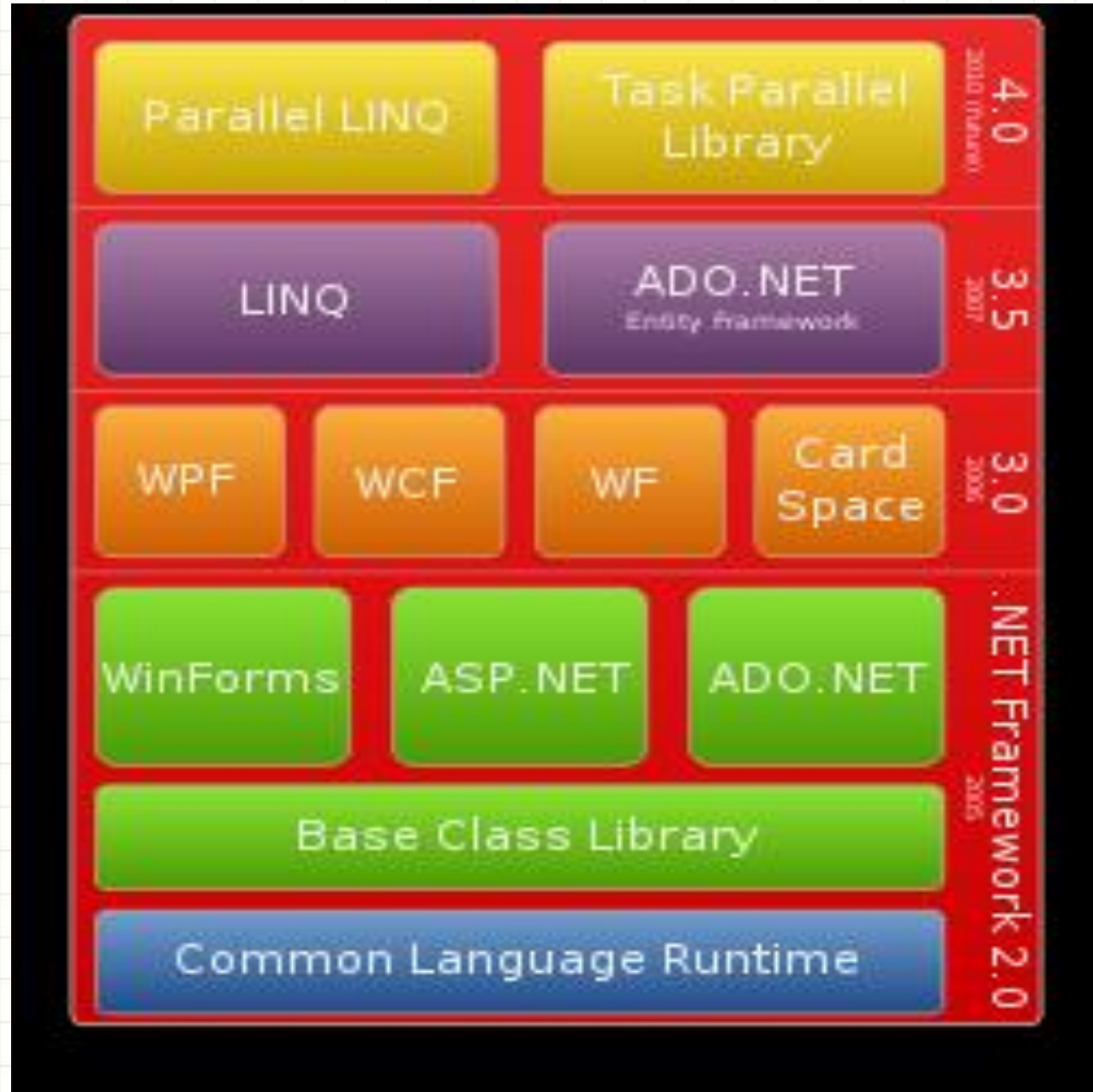


# .NET Framework

- It is only 8 years old:
  - 1.0 = 2002
  - 1.1 = 2003
  - 2.0 = 2005
  - 3.0 = 2006
  - 3.5 = 2007
  - 4.0 = 2010

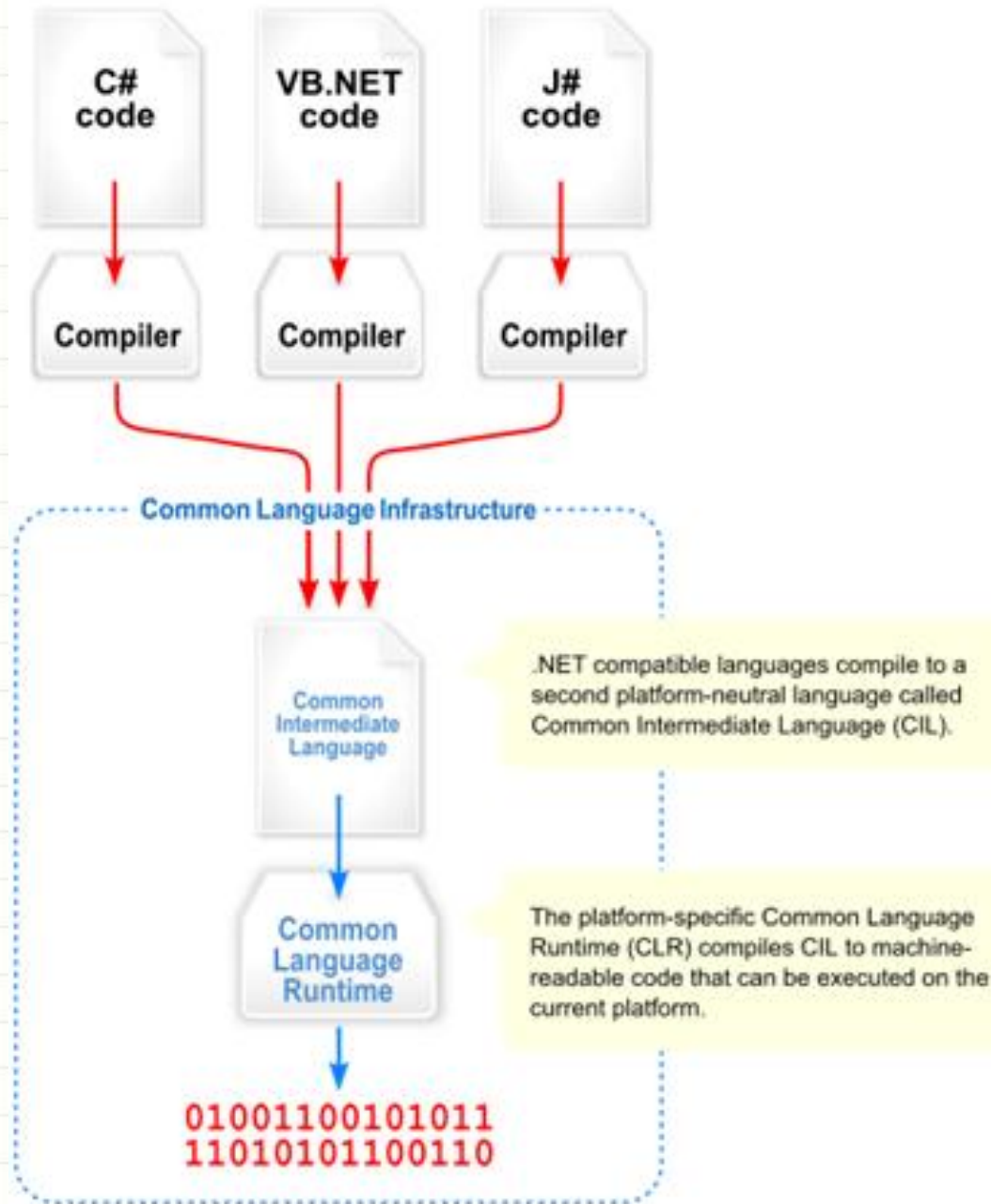
## 2. .NET Frameworks

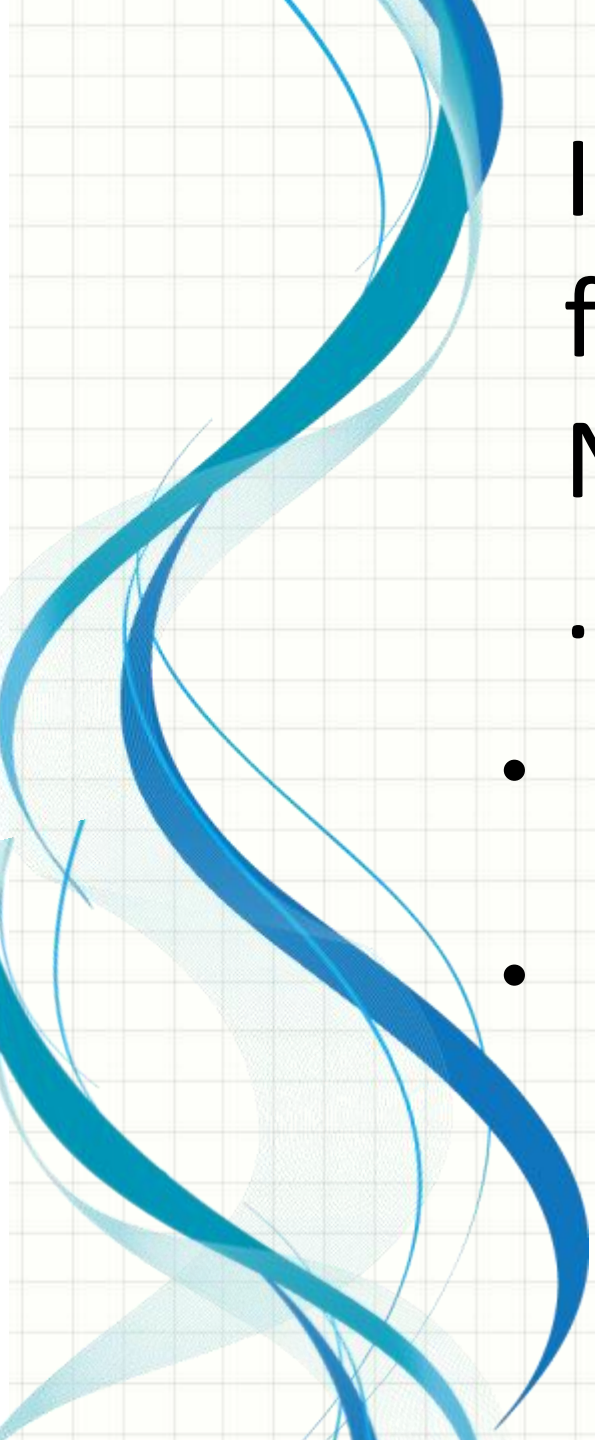
- 1.0
- 1.1
- 2.0
- 3.0
- 3.5
- 4.0





## 2. .NET Frameworks





# Interoperability: Going from Managed Code to Native (.NET => .COM or .DLL)

- To access COM objects, you use `System.Runtime.InteropServices`
- To access other native code objects like Windows API, you use P/Invoke feature





# .NET Framework Resides:

C:\Windows\Microsoft.NET\Framework

C:\Windows\Microsoft.NET\GAC\_32

C:\Windows\Microsoft.NET\GAC\_MSIL

C:\Windows\Microsoft.NET\v4.0.30319

\Temporary ASP.NET Files (compiled op)

C:\Windows\Microsoft.NET\v4.0.30319

\Config\Machine.config



## **3. SECURITY**

### 3. Security – Authentication & Authorization

- Authentication asks: “Who is this?”
- Authorization asks: “Does this person have the rights to do this?”



# Different Levels of Security

- File Level
- Sql Server Level
- ASP.NET

# Different Levels of Security

- File Level

- Add Users

- Control Panel
    - Add User



## User Accounts and Family Safety

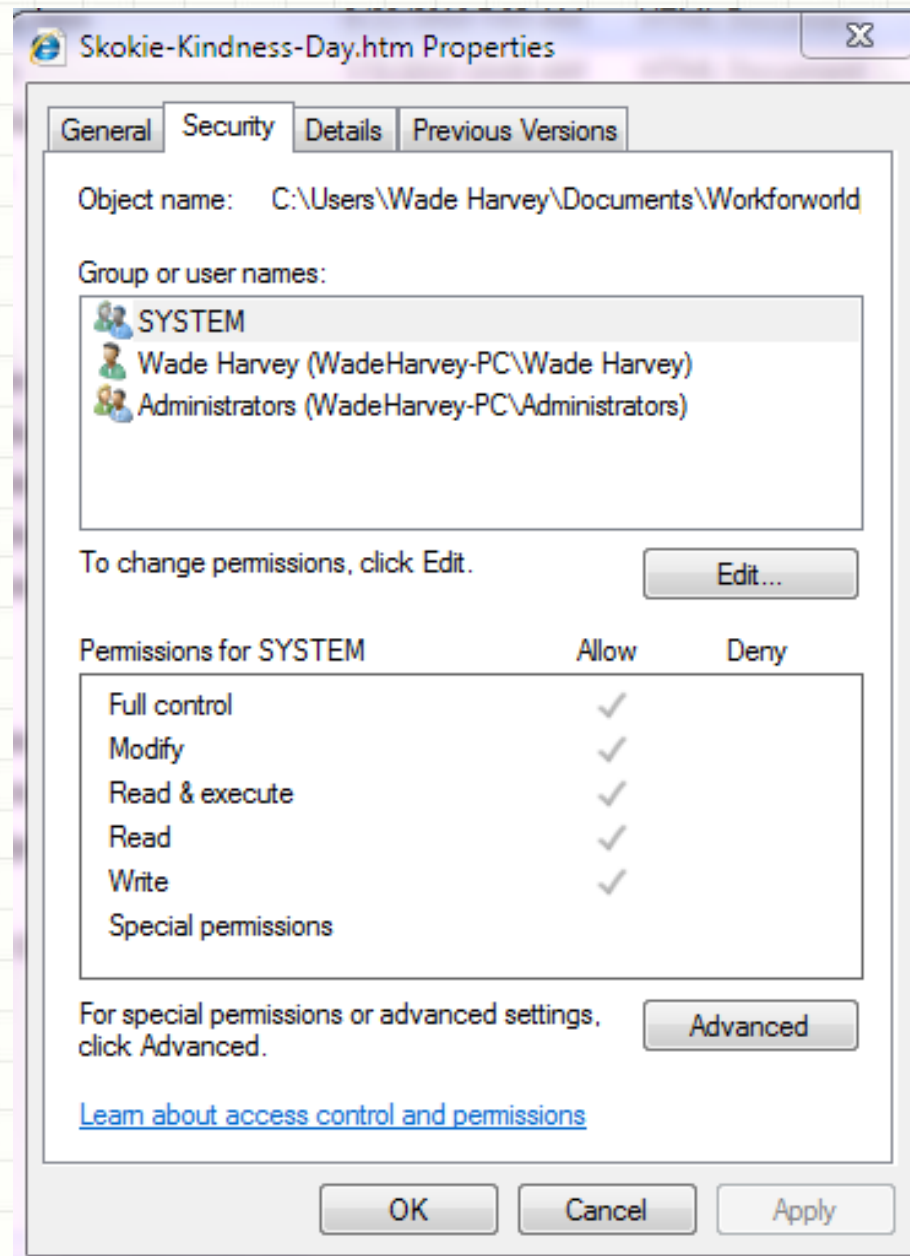
 [Add or remove user accounts](#)

 [Set up parental controls for any user](#)

- Windows Active Directory for Network

- Give file Permissions

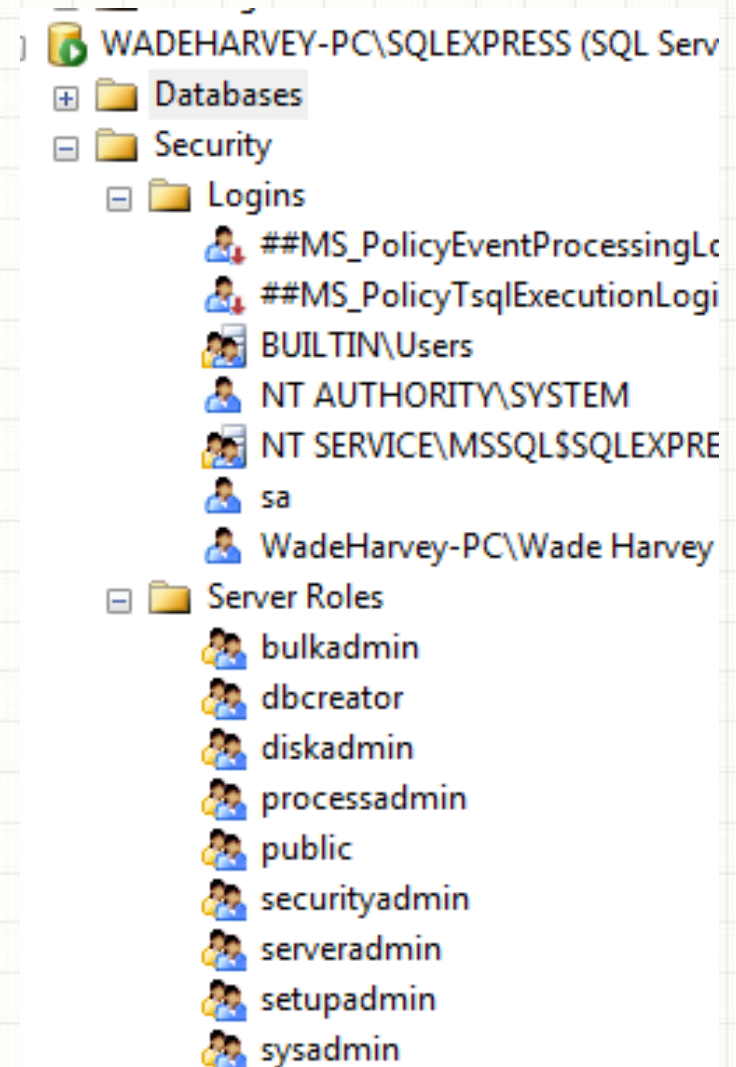
- Right-click file in windows explorer
    - Select properties/security tab
    - Use Edit to add person or rights for existing person





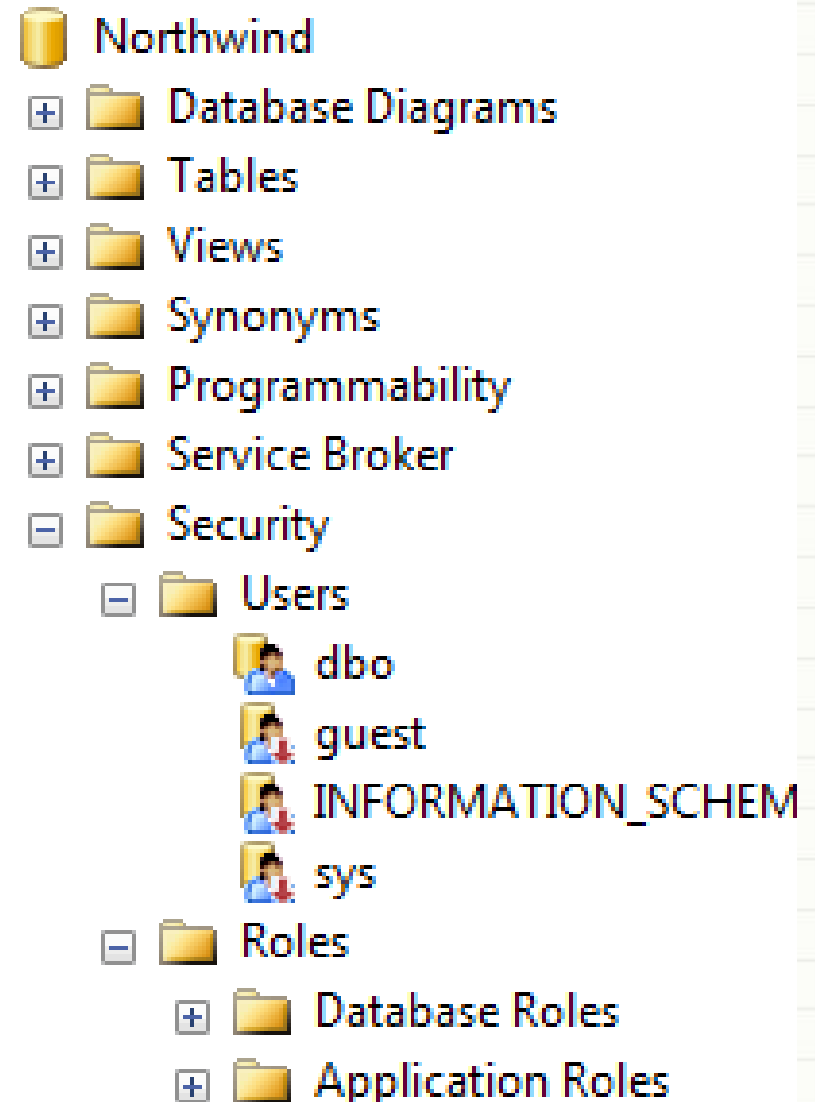
# Different Levels of Security

- SQL Server
  - Server Level – SQL Server Authentication vs. Mixed Mode
    - Logins
    - Server Roles



# Different Levels of Security

- SQL Server
  - Database Level
    - Users
    - Roles



# Different Levels of Security

- ASP.NET
  - Use ASP.NET Configuration Tool or do it programmatically
    - `AspNetSqlMembershipProvider`
    - `ConnectionString` in `web.config` points to DB
      - Add Users
      - Add Roles
      - Give Permissions
- Tables
  - `ASPNET_Applications`
  - `ASPNET_Membership`
  - `ASPNET_Paths`
  - `ASPNET_Personalization`
  - `ASPNET_Profiles`
  - `ASPNET_Roles`
  - `ASPNET_Users`
  - `ASPNET_UsersInRoles`
  - `ASPNET_WebEvents`

# Security

- How to find out who is using a process:
  - Type taskmgr in Windows taskbar/Start/Cmd
  - Right-click on Application and select Go to Process
  - The process will show who the user is

Applications Processes Services Performance Networking Users

Image Name	User Name	CPU	Memory (...)	Description
wltuser.exe *32	Wade Harvey	00	3,368 K	Windows ...
winlogon.exe	SYSTEM	00	2,320 K	Windows ...
WebDev.Web...	Wade Harvey	00	21,824 K	WebDev....
WebDev.Web...	Wade Harvey	00	14,736 K	WebDev....



## 4. MONITORING TOOLS

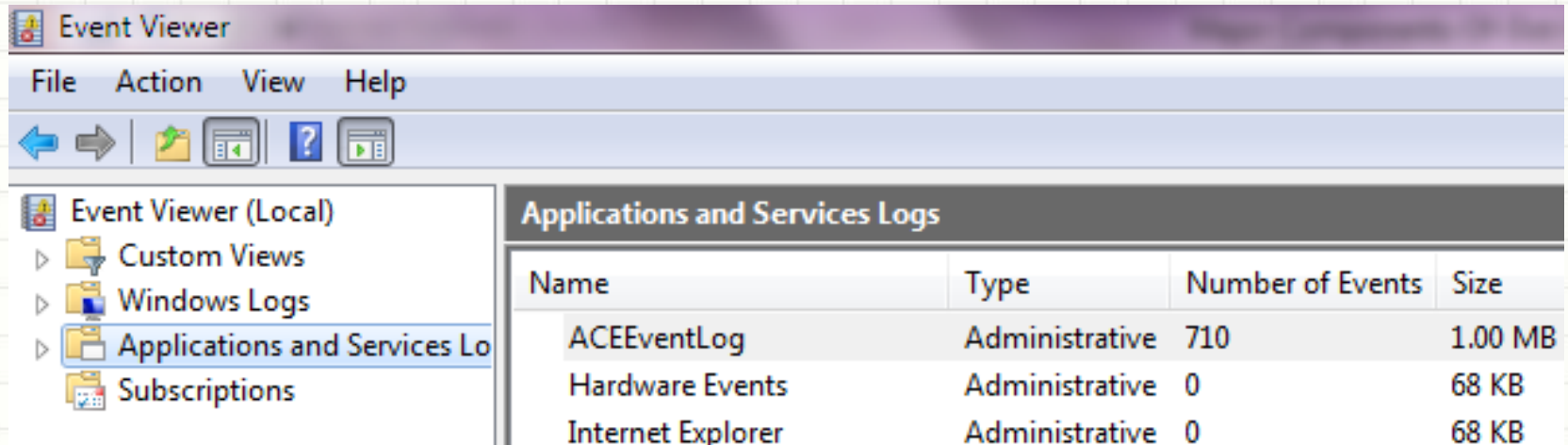


# 4. Monitoring Tools

- Event Viewer
- Task Manager
- Process Explorer
- Sql Profiler
- ILDASM

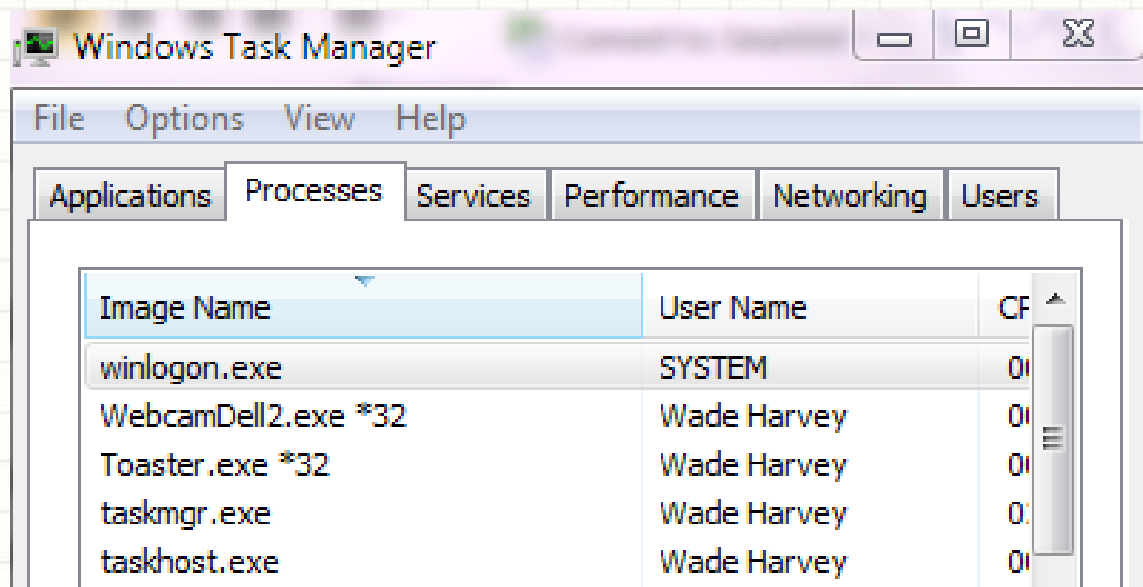
# 4. Event Viewer

- What is EventViewer?
  - It is a low-level way of looking at system events
- How do you get to EventViewer?
  - Start/Control Panel/Admin Tools/EventViewer



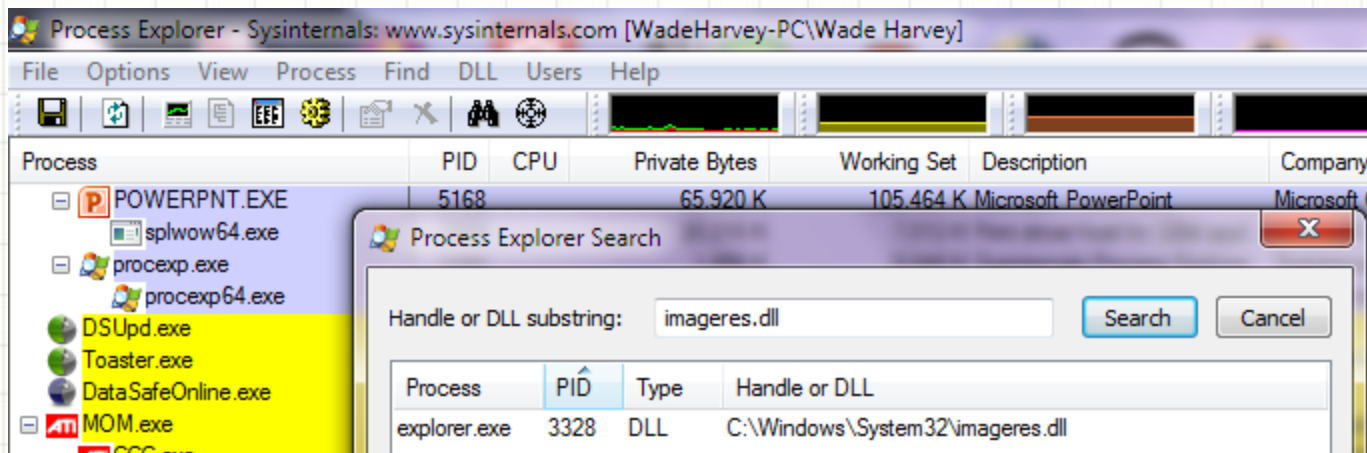
# 4. Task Manager

- What is Task Manager?
  - It shows applications, processes, and who is using them
- How do you get to Task Manager?
  - Ctrl+Alt+Delete or Start/Cmd and type taskmgr



# 4. Process Explorer

- What is Process Explorer?
  - It is like Task Manager, but allows you to use find to search who is using resource
- How do you get to Process Explorer?
  - You download from [www.sysinternals.com](http://www.sysinternals.com)



## 4. SQL Server Profiler

- What is SQL Server Profiler?
  - It allows you to monitor the execution of SQL commands
- How do you get to SQL Server Profiler?
  - It is under Program Files/Microsoft SQL Server/Performance Tools if you have SQL Server 2008
  - If you have the SQL Server Express edition, it is not included, but you can download AnjLab Express Profiler for free from:  
<http://sites.google.com/site/sqlprofiler/>



## 4. ILDASM

- What is ILDASM?
  - ILDASM (Intermediate Language Dis-Assembler allows you to decompile assemblies that are in MSIL
- Where is ILDASM?
  - It is under Program Files/Microsoft Windows SDK v7.1/Tools



## **5. WEB SERVERS**

# 5. Web Servers

- What does a Web Server do?
  - Receives HTTP requests
  - Authenticates Users
  - Executes Server code
  - Builds HTML Pages
- What are the two main Web Servers?
  - ASPNET Development Server
  - IIS (Internet Information Services)

# 5. Web Servers

- ASPNET Development Server
  - Executes under logon id of how you logged into Windows
  - Process name is WebDev.WebServer4.0.exe
  - Executes assemblies from Windows/Microsoft.NET/Framework/v4.0.30319/Temporary ASP.NET Files

# 5. Web Servers

- IIS (Internet Information Services)
  - Executes under logon id of IUSR\_MachineName
  - Process name is inetinfo.exe in IIS 5.x, http.sys in 6.0, and w3wp.exe in IIS 7.0
  - Resides in C:\Windows\System32\inetsrv
  - You can get to it by going to windows start button and selecting the run icon – then type inetmgr in the cmd line
  - Executes assemblies from inetpub/wwwroot

# 5. Web Servers

- IIS (Internet Information Services)
  - Windows 2000 & XP – IIS 5.0 – inetinfo.exe listens port 80
  - Windows 2003 & Vista – IIS 6.0 – http.sys listens from kernel
  - Windows 2008 & Windows 7 – IIS 7.0 – w3wp.exe
- ASP.NET Runtime
  - IIS 5.x = aspnet\_wp.exe
  - IIS 6.0 w3wp.exe
- ISAPI (Internet Server Application Programming Interface) – decides what should go to ASP.NET runtime based on extension (.aspx)





## **6. SQL SERVER**

# 6. SQL Server

- What is SQL Server?
  - SQL Server is a database server that listens for SQL commands and returns information from SQL databases
- Where is SQL Server?
  - Programs - Program Files/Microsoft SQL Server/100/MSSQL10.MSSQLServer/MSSQL/Binn
  - Databases - Program Files/Microsoft SQL Server/100/MSSQL10.MSSQLServer/MSSQL/Data
- What File Level Security is needed to access a database?
  - You have to give access rights for SQL Server database to either yourself (if you connect in mixed mode) or to username (if you use SQL Server Authentication)
- How do you create an instance of SQL Server?
  - This happens in the setup process for SQL Server – the default instance for SQL Express is machinename/SQLEXPRESS

## 6. SQL Server

- How do you start and stop an instance of SQL Server?
  - You can use SQL Configuration Manager which is in Program Files/
- What is SSMS?
  - SSMS is SQL SERVER Management Studio – it allows you to connect to a server , run commands, and edit tables.



## **7. SOFTWARE DEVELOPMENT TOOLS**

# 7. Software Development Tools

- What tools do I need?
  - Sql Server, SQL Server Management Studio (SSMS), and Visual Web Developer
- Where can I get express (free) versions?
  - [www.microsoft.com/express](http://www.microsoft.com/express)
- Where do the tools reside?
  - Program Files/Microsoft Visual Studio 10.0
  - Program Files/Microsoft SDKs/Windows/v7.0/bin/gacutil
  - Program Files/Microsoft SQL Server/100/MSSQL10.MSSQLServer/MSSQL/Binn & Data



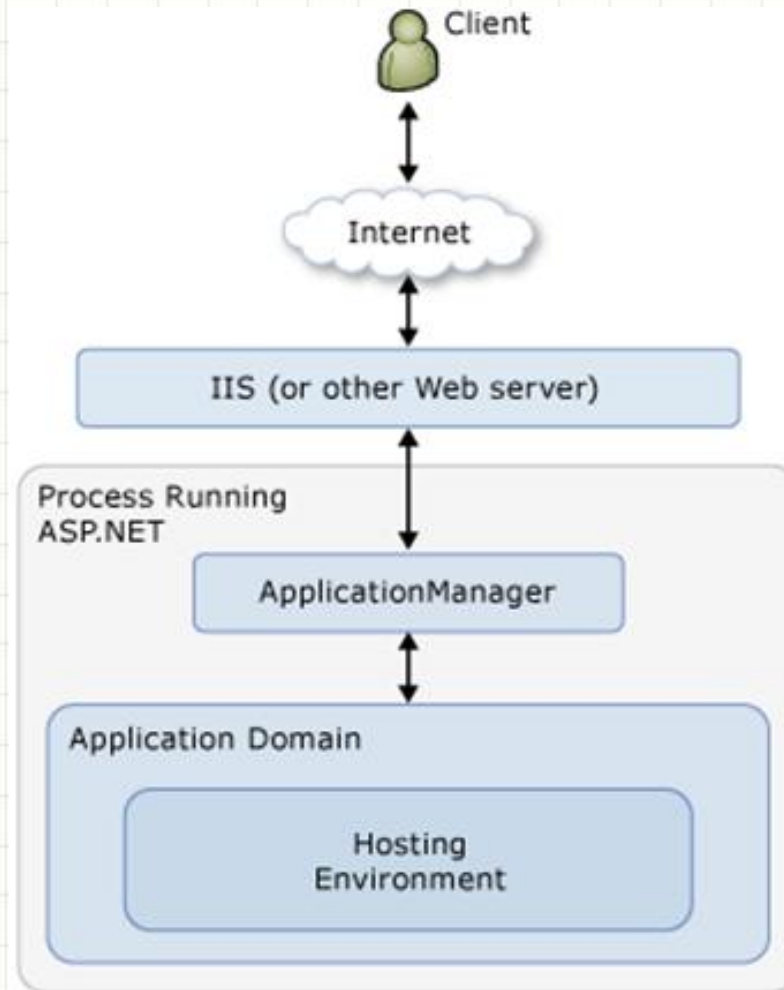
# 7. Software Development Tools

- What happens when I compile a page?
  - Source starts in Program Files/Microsoft Visual Studio 10.0/Projects or Websites
  - Project Property Pages/Build Options in VS can specify VS2008/Projects/Project name/ for precompiled files and solution files .sln and .suo
  - Precompiled version consists of aspx pages and dll's for code-behind. Dlls are in MSIL that gets converted to native language at runtime
  - Compiling involves bringing in the pieces needed from .NET Framework and from GAC (Global Assembly Cache)
  - Compiled Version goes in C:/Windows/Microsoft.NET/Framework/v4.0.30319/Temporary ASP.NET Files

# 7. Software Development Tools

What happens when a page executes?

<http://msdn.microsoft.com/en-us/library/ms178473.aspx>

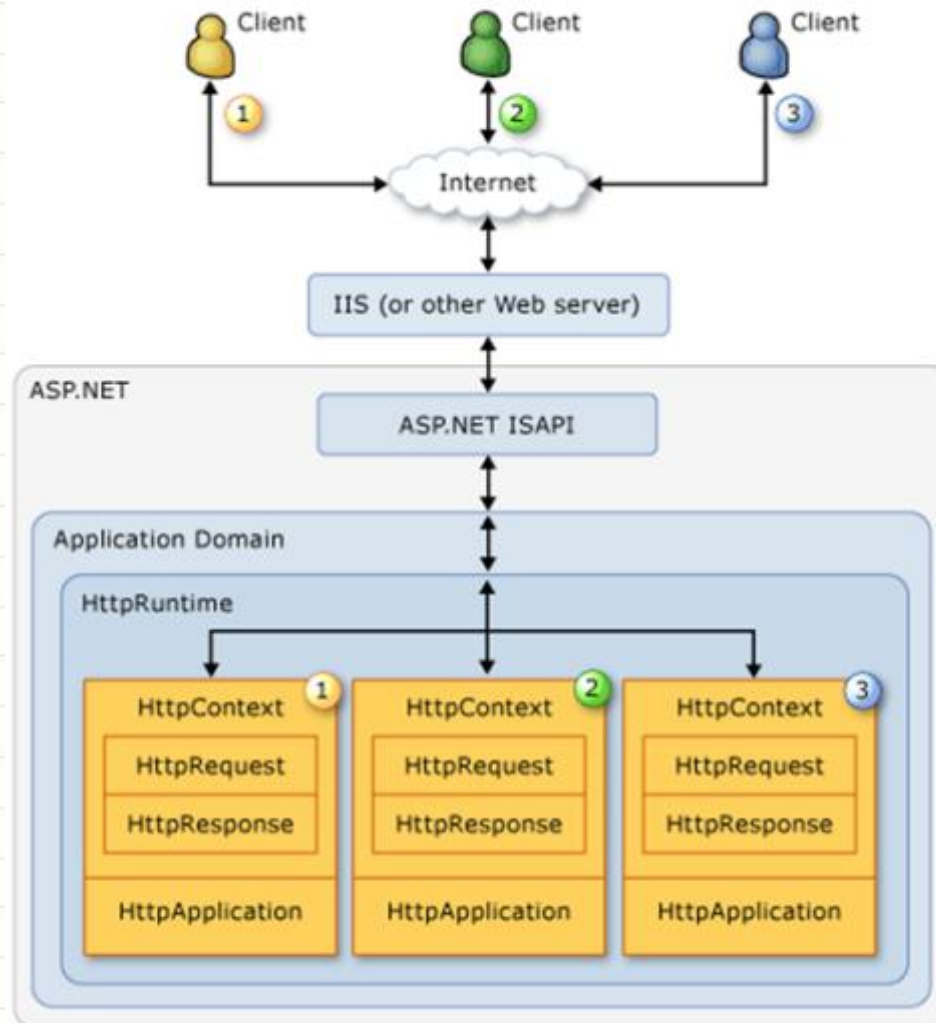


# 7. Software Development Tools

- What happens when a page executes?
  - User on client machine creates HttpRequest
  - url => dns => IP address => telephone number of machine
  - If dns has not populated on internet, you can associate url to ip address on your machine temporarily by manually editing c:\windows\System32\drivers\etc\host
  - IIS or ASPNET Development Server
- ISAPI
- ASP.NET
- App Domain
- HTTP Runtime

# 7. Software Development Tools

- What happens when a page executes?



# 7. Software Development Tools

- What happens when a page executes?  
(Continued)
  - IIS or ASPNET Development Server
    - .ISAPI looks at extension and turns .aspx extension over to asp.net
    - ASP.NET creates Application Domain the first time and then starts an ApplicationRequest
    - HTTP Runtime can handle multiple HTTPContexts and inside each one is an HTTP Request and an HTTP Response (Page and cookies are involved in request and response)



# 7. Software Development Tools

- What happens when a page executes?  
(Continued)
  - .HTTP Runtime does the following:
    - .validateRequest for malicious markup
    - remaps urls
    - uses .NET Framework to convert MSIL in Temporary ASP.NET Files and GAC to native code
    - Checks Authentication and authorization
    - invokes IHttpHandler to process request - .aspx => System.Web.UI.PageHandler



## 8. LANGUAGES

# 8. Languages

.NET	.NET Programming (C# or VB) (Web or Desktop)			
Key Supporting Languages	HTML	CSS	JavaScript	SQL Server



**QUESTIONS?**